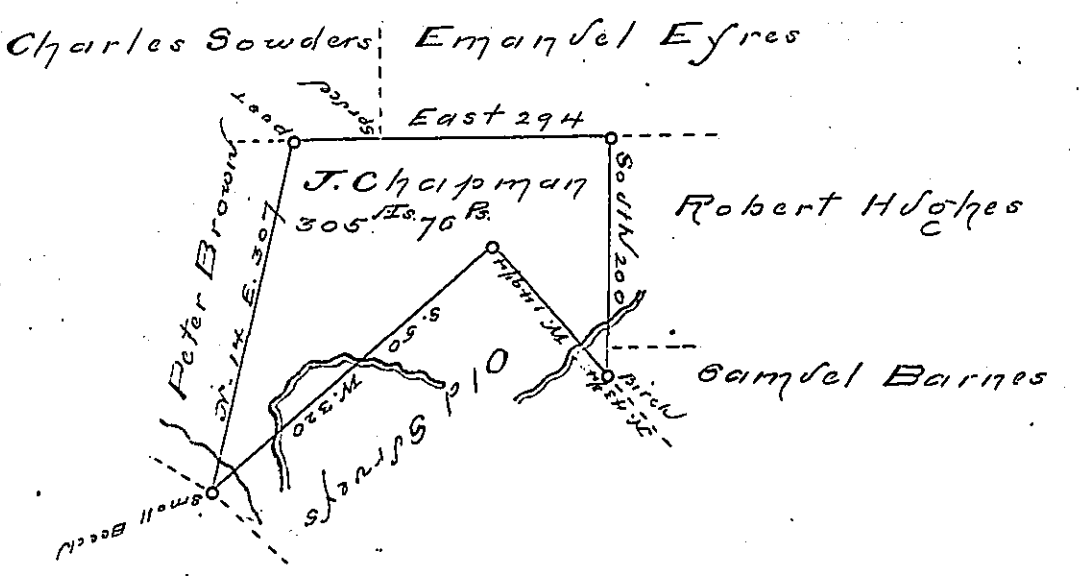


Scale 200 perches to the inch



In pursuance of a Warrant dated March 22^d 1793 Surveyed October 22^d 1794 by Anthony Coates late Deputy Surveyor for James Chapman the above Described tract of Land Situate on the Waters of Wapaukin creek in the County of Luzerne Containing three hundred and five acres and Seventy six perches and allowances of six per Cent.

Samuel Cochran Esq^r } Certified by
 Surveyor General } Geo. Haines Esq.

IN TESTIMONY that the above is a copy of the original remaining on file in the Department of Internal Affairs of Pennsylvania, made conformably to an Act of Assembly approved the 16th day of February, 1833, I have hereunto set my Hand and caused the Seal of said Department to be affixed at Harrisburg, this

— Hurd — day of — September — 1895.

James W. Latta
 Secretary of Internal Affairs.